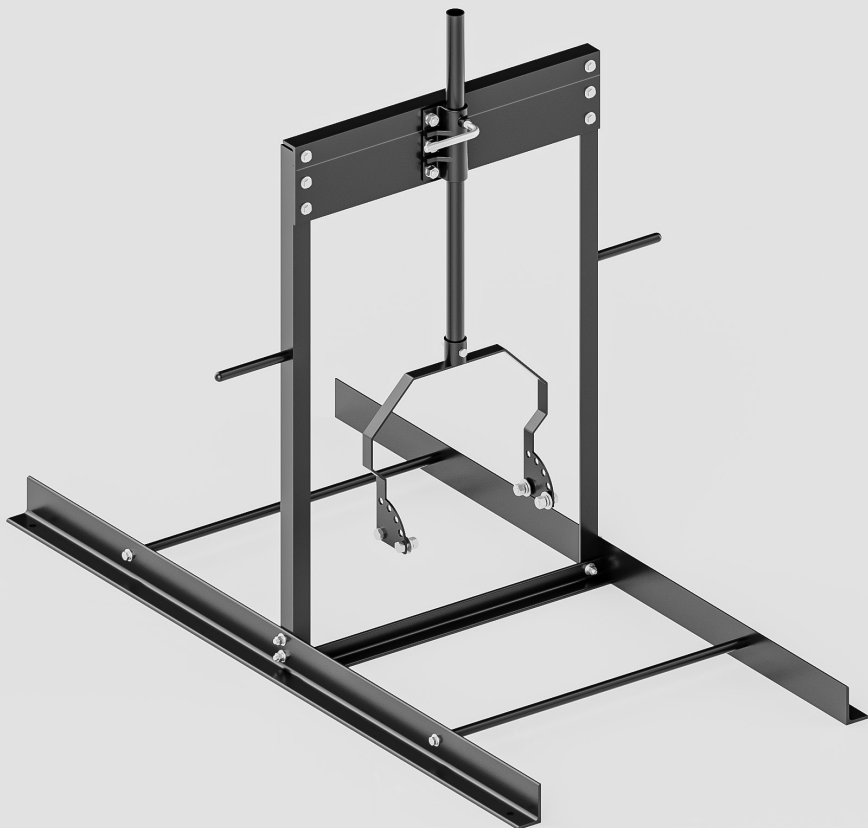


AIRMAX[®]

Shallow Water Stand | Assembly Instructions



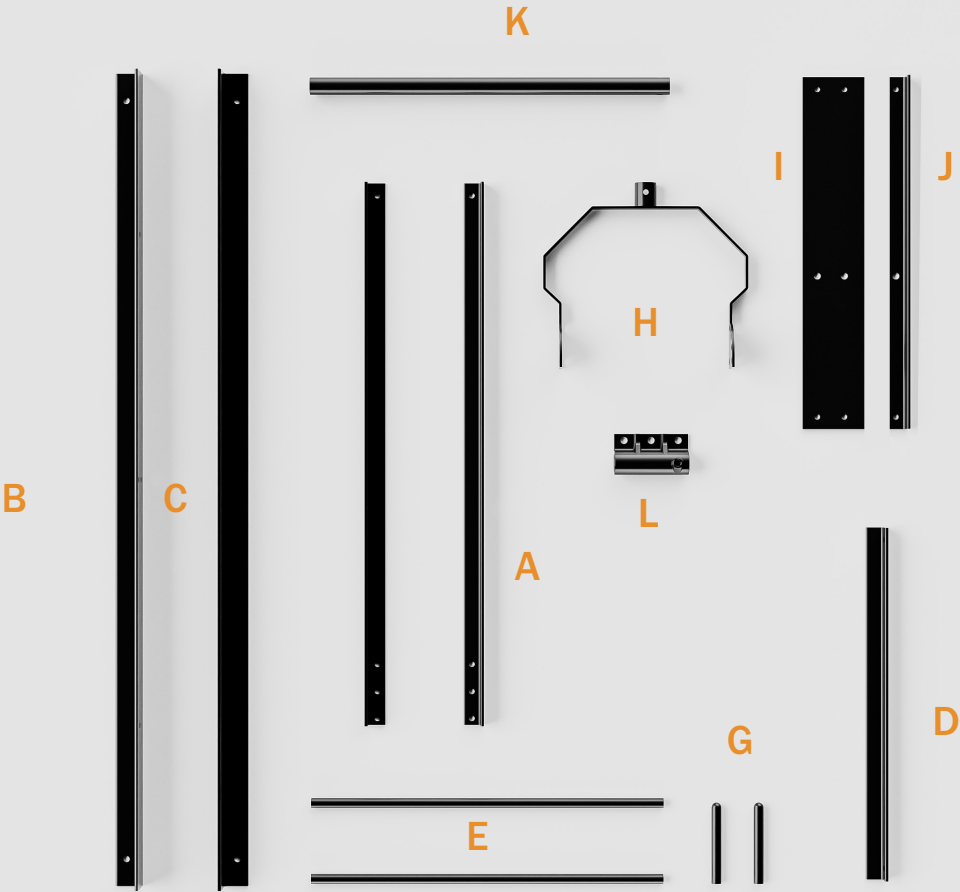
Parts

STAND PIECES:

QTY	DESCRIPTION
A 2	Foot (angle): 2" × 3" × 60"
B 1	Left Vertical Bar (angle): 1½" × 1½" × 40"
C 1	Right Vertical Bar (angle): 1½" × 1½" × 40"
D 1	Bottom Horizontal Bar (angle): 1½" × 1½" × 26"
E 2	Support Bar: 0.75" diameter; 26"
G 2	Handle
H 1	Bail
I 1	Plate
J 1	90 degree Bracket
K 1	Pipe: 1" diameter; 26½"
L 1	Pipe Holder

HARDWARE:

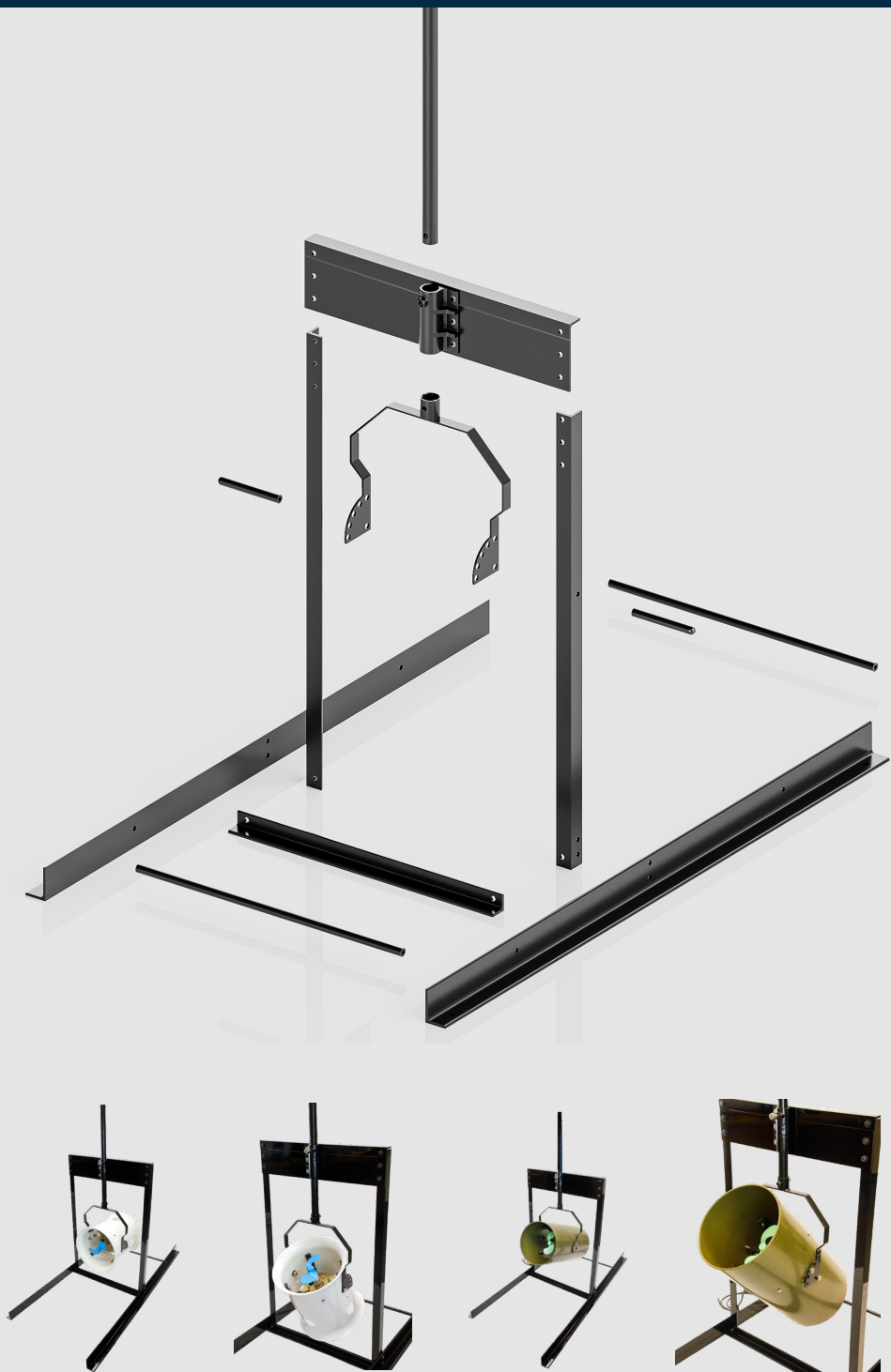
QTY	DESCRIPTION
7	½-13 × 1¼" Bolt
1	¾-16 × 2¼" Bolt
18	¾-16 × 1" Bolt
14	¾" Nut
30	¾" Flat Washer
16	¾" Lockwashers
7	½" Flat Washer
7	½" Lock Washer
7	½-13" Hex Nut
1	½-13 × 4-¾" L Bolt



*drawings not to scale

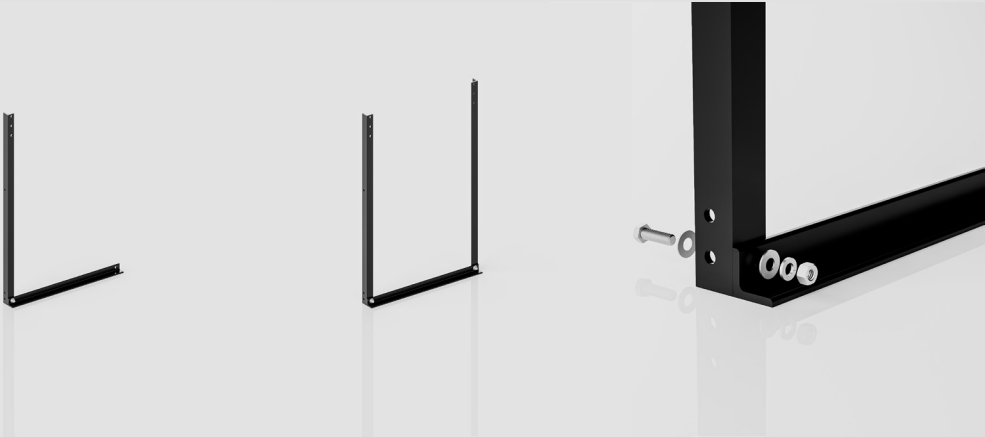
*(2) 9/16 wrenches for assembly (not included)

Frame



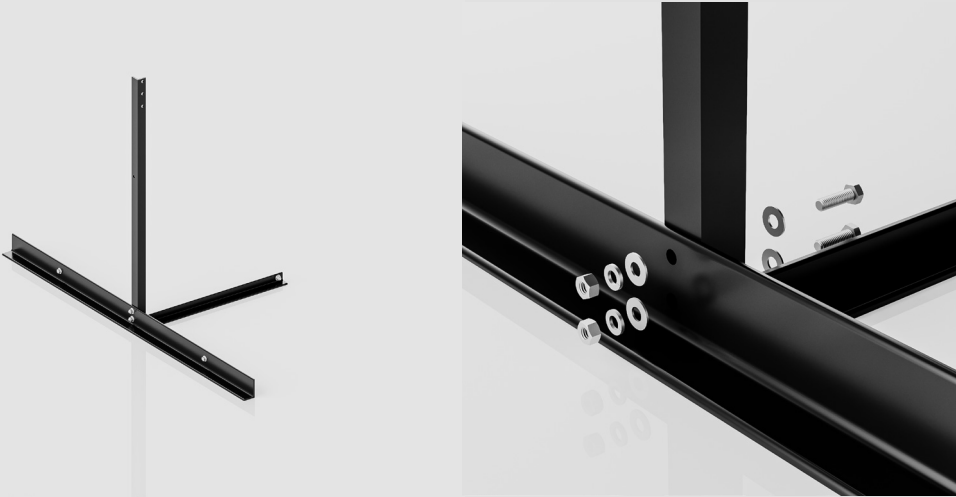
Step One:

Attach the Bottom Horizontal Bar (D) to the Left Vertical Bar (B) and Right Vertical Bar (C) with $\frac{3}{8}$ "-16 x 1" bolts, washers & nuts.



Step Two:

Attach Foot (A) with $\frac{3}{8}$ "-16 x 1" bolts, washers & nuts.



Step Three:

Attach Foot (A) with $\frac{3}{8}$ "-16 x 1" bolts, washers & nuts.

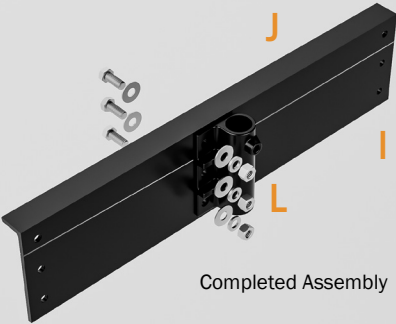


Step Four:

Attach Support Bar (E) to the Left and Right Feet with $\frac{3}{8}$ "-16 x 1" bolts & washers.



Step Five

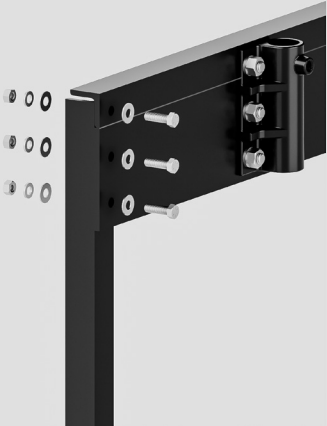


Directions to assemble the Horizontal Assembly:

QTY	Description
3	$\frac{1}{2}$ -13 \times $\frac{1}{4}$ " Bolts
6	$\frac{1}{2}$ " Washers
3	$\frac{1}{2}$ " Lockwasher
3	$\frac{1}{2}$ " Nut
1	Pipe Holder
1	Plate
1	90 Degree Bracket

Step Six:

Attach Horizontal Assembly to the Left Vertical Bar (B) and Right Vertical Bar (C) with $\frac{3}{8}$ "-16 x 1" bolts, washers & nuts.



Step Seven:

Attach Handles (G) to the Left and Right Vertical Bars with $\frac{3}{8}$ "-16 x 1" bolts & washers.



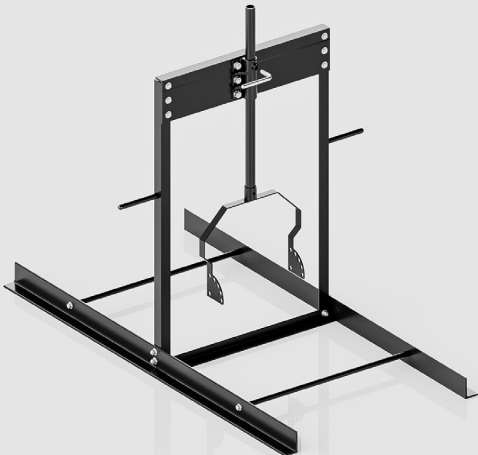
Step Eight:

Slide Pipe (K) into Horizontal Assembly and secure with the L Bolt.



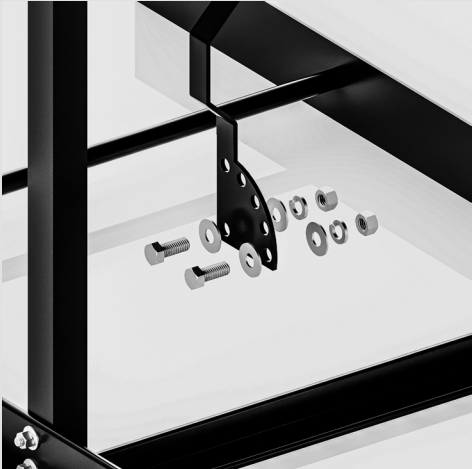
Step Nine:

- a) Slide Bail (H) onto pipe (K), aligning the holes.
- b) Attach Bail (H) into Pipe (K), with a $\frac{3}{8}$ "-16 x 2 $\frac{1}{4}$ " bolt and nut.



Step Ten:

Loosen the nuts and bolts on the bail, then adjust the shroud to the desired angle. Re-tighten the bolts with washers and lock washers.



AIRMAX[®]

Shroud Application Hardware

$\frac{3}{8}$ " - 16 x 1" Bolts (4)

$\frac{3}{8}$ " Washers (4)

$\frac{3}{8}$ " Lockwasher (4)

$\frac{3}{8}$ " Nut (4)

Sizing Chart:

75000 - Large Dock Mount (fits P750, P1000, W750 & W1000 models)

75001 - Small Dock Mount (fits P500)

Shallow water stand positioning guide provides 5 different angles for your Ice Eater or Weeds Away.



WARNING: This product contains lead, a chemical known to the State of California to cause cancer and birth defects or other reproductive harm.