


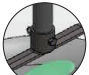
DOCK MOUNT - INSTALLATION INSTRUCTIONS

The Dock Mount is the premium option to consider for positioning your ice Eater and/or Weeds Away. The Dock Mount gives you control from the comfort of your dock. You can change the depth, direction, and angle of your product easily with just a few turns of the tightening handle. Steel mounting base, bail, & pipe holders are all heavy duty marine grade double powder-coated for maximum protection against corrosion. Stainless steel fasteners provided for easy use in all salt water applications.

- New models of Ice Eater & Weeds Away shrouds come with dock mount holes.
If that is the case then skip to **#3**.

1. ——— Locate holes to be drilled at 45° from the motor brackets. A second set of holes will be directly across from the first set.
2. ——— Using a 9/16" drill bit. Drill first hole at 7 1/2" (for P750 & P1000) or 6" (for P500), from the bottom of the shroud, Drill a second hole 2 1/2" vertically from the first hole.

* See Page 2 for instructions with pictures.

3. ———  After holes are drilled, attach bail to shroud using 1/2" x 1 1/4" bolts, washers and nuts.
4. ———  Using the top of the bail as a guide drill a 3/8" hole through the pole. Attached the pole and bail together with the last bolt, washer, & nut.

PARTS INCLUDED IN DOCK MOUNT BOX:

- (1) Bail
- (1) Pipe Holder
- (1) Tightening Handle
- (1) Dock Bracket
- (7) 1 1/2" Flat Washer
- (7) 1/2" X 1 1/4" Bolt
- (7) 1/2" Lockwasher
- (7) 1/2"Nut
- (2) 3/8" x 16 x 2 1/4"
- (2) 3/8" x 16 CSNA nut

WHAT YOU NEED TO PROVIDE:

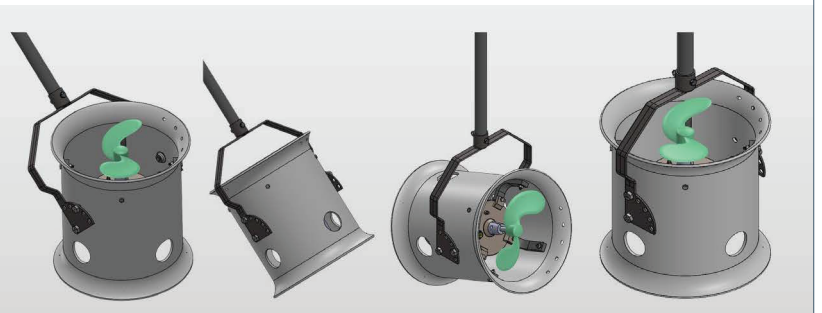
- 1" galvanized or stainless steel pipe
- a solid pipe is suggested (max. Length 6ft.)
- U-bolts or Lag Screws (for securing dock mount)

SIZING CHART:

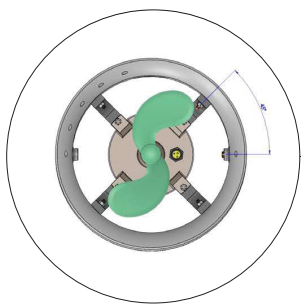
75000 - Large Dock Mount (fits P750, P1000. W750 & W1000 models)

75001 - Small Dock Mount (fits P500)

A Dock Mount allows you to easily adjust the depth and angle of your Ice Eater or Weeds Away with ease.

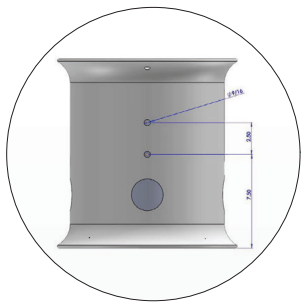


INSTRUCTIONS FOR DRILLING SHROUD ASSEMBLY



STEP 1:

Locate holes to be drilled at 45° from motor brackets. A second set of holes will be directly across from the first set.



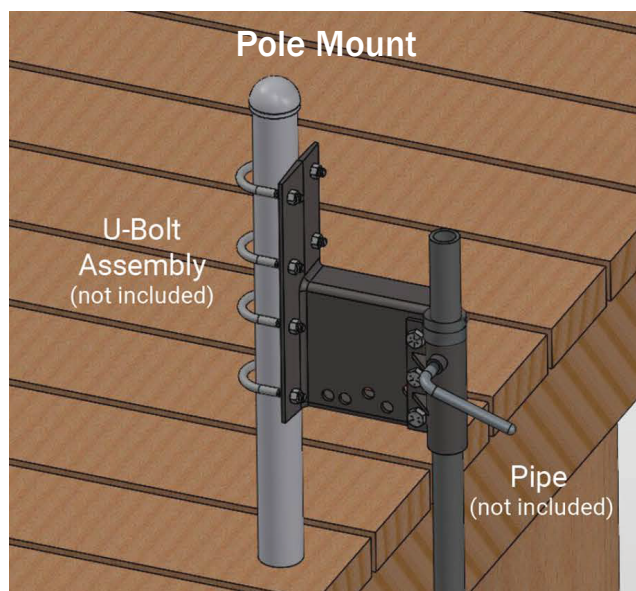
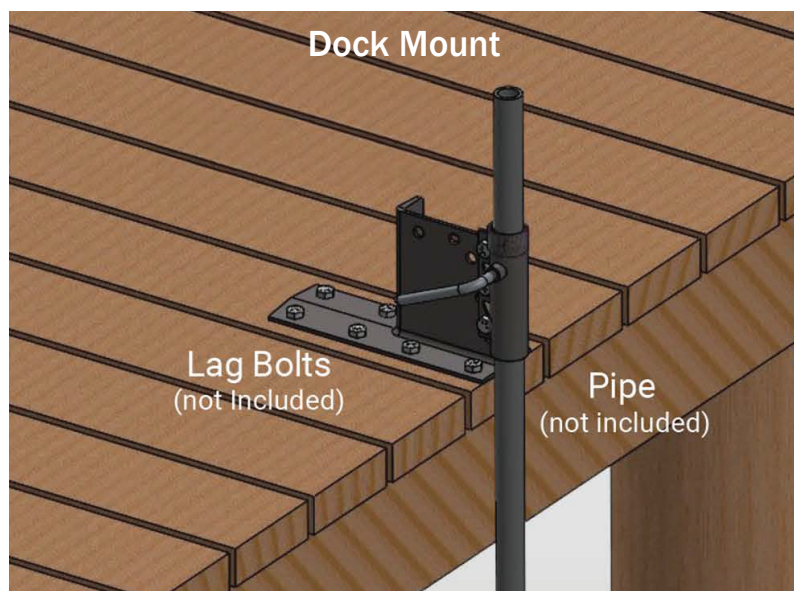
STEP 2:

Drill first hole at 7 1/2" from the bottom of the shroud.

Drill a second hole 2 1/2" vertically from the first hole.

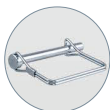
Using a 9/16" bit to drill holes in the shroud. After holes are drilled, attach the bail to the shroud by placing the flat washer onto the 1/2" bolt. Slide the bolt through the holes, the head of the bolt and flat washer should be on the outside of the shroud. The lock washer and nut secure everything together on the inside of the shroud. Repeat for all 4 holes.

OPTIONS FOR DOCK OR POLE MOUNTING



SAFETY TIPS:

When setting up your Ice Eater or Weeds Away on a dock mount, prioritize safety and ease of use. To enhance these, add these accessories when buying the 6-foot pole:



SAFETY HITCH PIN:

Drill a hole 1/2" from the top of the 6-foot pipe and insert a safety hitch pin to prevent the pole from slipping out of the mount.



INSTALL SHAFT COLLAR:

Attach a shaft collar to the 6-foot pole for an additional layer of security, keeping it firmly in place and reducing slippage during adjustments.

* These items aren't included in your order; buy them from your local hardware store.

