

ADAPTER INSTALLATION INSTRUCTION MANUAL

Item #651047 - Universal Kit



Table of Contents:

Important Information	2	Installation Instructions	3-8
Product Contents	2	Replacement Parts	8
Tools Required	3		

IMPORTANT INFORMATION:

Please read these instructions thoroughly before use. Failure to follow instructions may result in equipment damage or failure, losses, injury or death.

⚠ **DANGER:** ⚠

To avoid possible electric shock:

- If the power cord has been damaged, DO NOT operate.

⚠ **WARNING:** ⚠

To reduce the risk of electric shock or injury:

- Connect only to a properly grounded receptacle, which is serviced by a Ground Fault Circuit Interrupter.
- Provide a “drip loop” for the power cord. This is a loop in the cord below the level of the receptacle or plug that prevents water from traveling along the cord in the direction of the receptacle.
- ALWAYS unplug the fountain or light kit from the power source before installing, removing or servicing the fountain or light kit components.

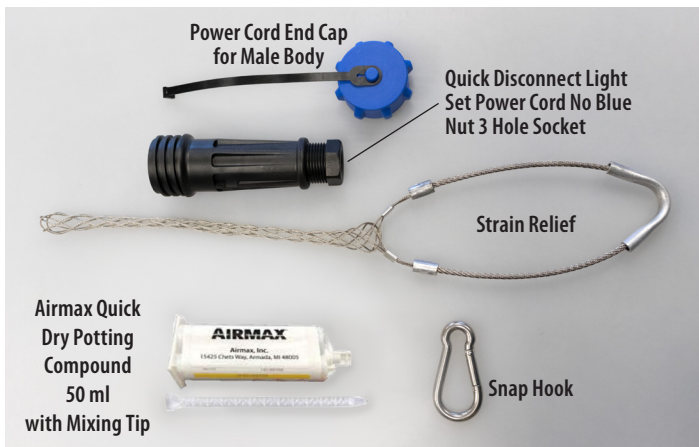
⚠ **CAUTION:** ⚠

To reduce the risk of equipment damage or failure:

- DO NOT operate during freezing conditions. Disconnect and store in a protected location.

IMPORTANT: Airmax® is not responsible for equipment damage or failure, losses, injury or death resulting from failure to follow safety precautions, misuse or abuse of equipment.

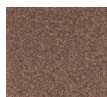
PRODUCT CONTENTS:



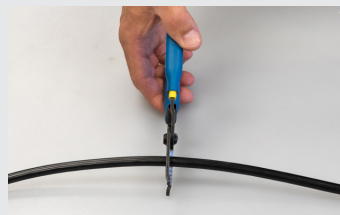
INSTALLATION INSTRUCTIONS:

Tools Required:

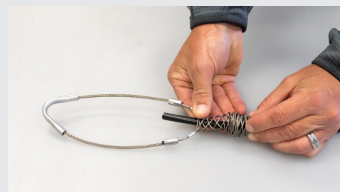
- Wire Strippers
- Cable Cutters
- Electrical Tape
- #1 Flat Screwdriver
- Sheathing Strippers
- 50ml Applicator Gun (2:1 Ratio)
- Medium Grit Sandpaper
- Alcohol or Alcohol Wipes
- Purple PVC Primer
- Nitrile/Latex Gloves
- Tape Measure



- 1** CUT below the disconnect on your existing power cord to remove.

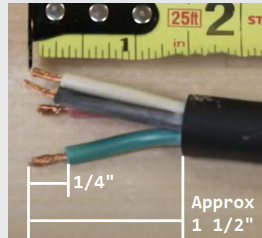


- 2** COMPRESS the strain relief and slide at least 18"-24" onto the power cord with the strain loop toward the cord end.



- 3** STRIP the black cord sheathing back 1-1/4" to 1-1/2" from the end of the wires, then STRIP the individual wire sheathing back 1/4" from the end of each wire.

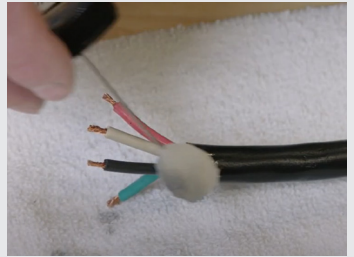
NOTE: If any Polyflex or Stainless Steel cord protection is present, be sure to slide that back 6" from the end of the cord and temporarily tape in place



4 **SCUFF** the power cord sheathing and colored wire sheathing with medium grit sandpaper to make sure all sheathing has a dull or etched appearance.



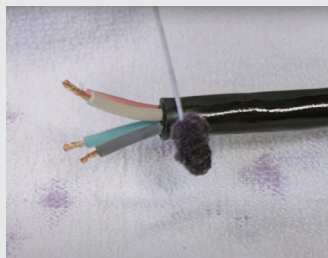
5 **SWAB** or clean the wires, sheathing, internal disconnect body and end nut thoroughly with alcohol or alcohol wipes to remove any debris and allow them to dry completely.



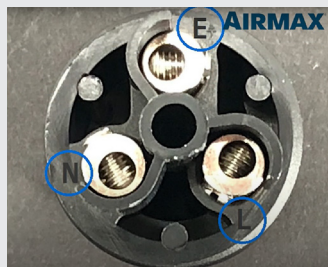
6 **SWAB** the inside of the disconnect body and end nut interior wall and threads with **PURPLE PVC PRIMER**, allowing them to dry completely. Then **slide** the end nut and disconnect body onto the cord up to the strain relief to make sure they do not interfere with final cord prep.



7 SWAB individual colored wires and black cord sheathing with PURPLE PVC PRIMER and allow them to dry completely.



8 WIRE each of the colored wires into the appropriate terminal in the disconnect receptacle using a #1 flat screwdriver. E = GREEN, L = BLACK, and N = WHITE. Ensure all wires are secured properly and that no fraying has occurred.



9 SLIDE the quick disconnect body up to the receptacle, then turn the disconnect body **counterclockwise** and hold the receptacle in place with a flat screwdriver in the center slot. **DO NOT** spin the receptacle with the screwdriver; this will cause the wires to twist and pull out of the terminals. The receptacle should be flush with the end of the disconnect when secured.



10 PURGE the first 2-3 mls of the 50ml tube of potting compound into a bag or cup to ensure a proper mixture.



11 FILL the disconnect body while keeping it in the upright position. Fill until the last 2-3 threads are still visible inside the end of the disconnect.



12 SLIDE the end nut up to the quick disconnect body tighten completely. If potting compound does not pool at the top of the end nut, fill the remainder with potting compound as needed.



13 ALLOW potted quick disconnect to cure for a minimum of 45-60 minutes, making sure to keep the disconnect and cord in the upright position.
NOTE: Potting should always be done in an environment where ambient temperature is between 60 and 80 degrees fahrenheit. DO NOT allow the compound to freeze.



14 SET the strain relief 18" - 24" from the disconnect or whatever is needed to allow slack between the quick disconnect and the strain relief so there is no tension when the cord is installed.



15 REPOSITION any stainless or cord protection by sliding it up to the end nut, then zip tie or tape in place.



16 SNAP the carabiner onto the strain relief loop and connect to either the float mount ring or tie down ring depending on the fountain model.



17 CONNECT the power cord to the light kit quick disconnect. NOTE: When the cord is not use, attach the power cord end cap to protect the quick disconnect from debris during storage.



REPLACEMENT PARTS

REPLACEMENT PARTS	ITEM #
Quick Disconnect Light Power Cord No Blue Nut 3 Hole Socket	#651425
Airmax Quick Dry Potting Compound 50 ml w/ Mixing Tip	#652195
Stainless Steel Strain Relief	#651061
Stainless Steel Snap Hook	#651343
Power Cord End Cap, Female	#651357

THANK YOU FOR CHOOSING:

Airmax[®], Inc.

15425 Chets Way Street
Armada, MI 48005

866-424-7629

www.airmaxeco.com